

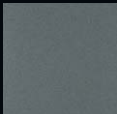





Wall tiles

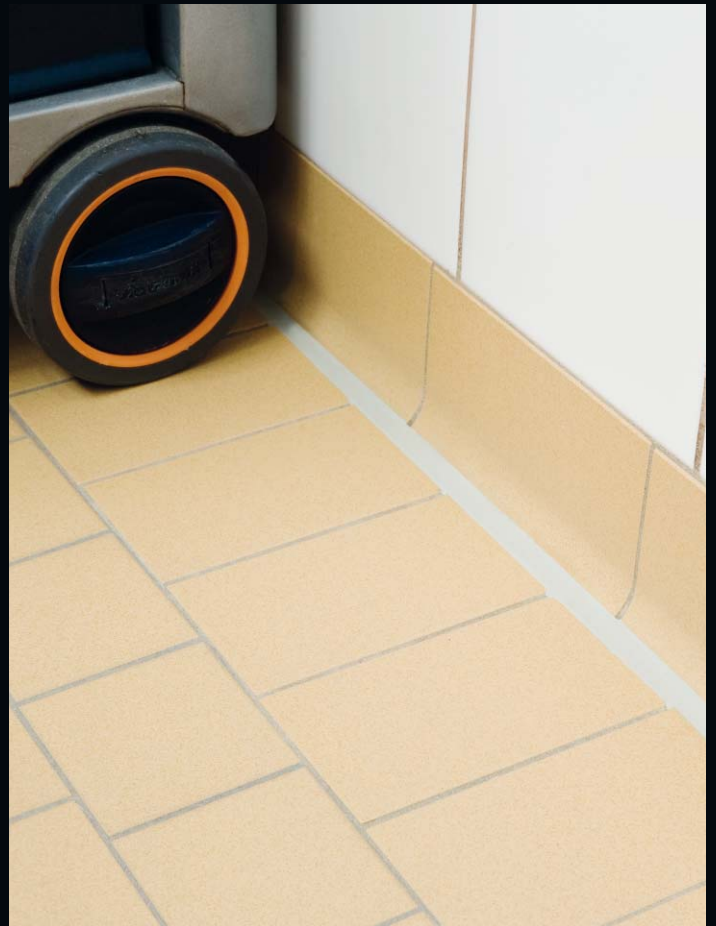
Art.-No.	Colour/Colourcode	Format	Package contents		Pallet contents		
			Pieces/Package	sqm/Package	sqm/Pallet	kg/sqm	kg/Pallet
31002009091	 Arkona white 310	198 x 198 x 9 mm	22	0,88	52,80	21	1.108,80
20002009091	 Light grey 200	198 x 198 x 9 mm	22	0,88	52,80	21	1.108,80
22002009091	 Titan grey 220	198 x 198 x 9 mm	22	0,88	52,80	21	1.108,80
2302009091	 Anthracite 230	198 x 198 x 9 mm	22	0,88	52,80	21	1.108,80



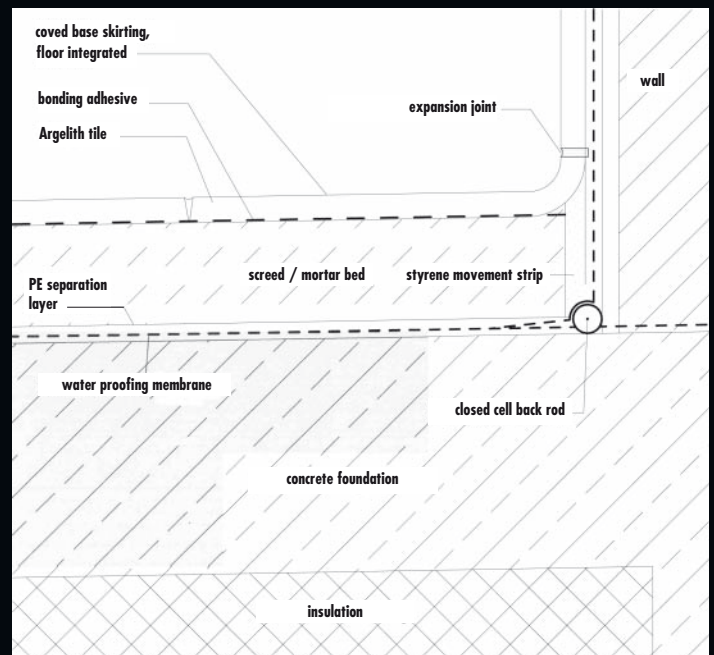
Scan the QR-Code
for more information!

Combining floor tiles and wall tiles offers you many advantages:

- ✓ Complete delivery from one supplier
- ✓ Ideally suited for use in washing bays / workshops
- ✓ Fully vitrified porcelain tiles ensure problem-free cleaning
- ✓ Equivalent resistance of both wall and floor tiles to acids and alkalis
- ✓ Ensures a technically ideal transition from floor to wall tiles using a matching Argelith covered base skirting tile
- ✓ Service pits can be tiled to meet highest safety standards



Installation of a floor integrated covered wall base skirting in a washing bay



Argelith Bodenkeramik H. Bitter GmbH

Schledehauser Str. 133 · 49152 Bad Essen · Germany
Phone +49 (0) 54 72 / 40 20 · Fax +49 (0) 54 72 / 15 12
info@argelith.com · www.argelith.com